



# WI, Retrofit Your-Supplier Product

<b>Document No:</b> 33777	<b>Revision:</b> A
<b>Change Order:</b> 56789	<b>Date Edited:</b> 6/02/26
<b>Approving Department:</b> Manufacturing Engineering	
<input checked="" type="checkbox"/> <b>Manufacturing WI</b>	<input type="checkbox"/> <b>Installation WI</b>

## Scope

This procedure applies to the Your-Product system and describes how to retrofit a standard Your-Product system to meet Samsung requirements per RPQXXXX. The procedure includes the following main tasks.

- [Remove UPS](#)

## Purpose

To ensure a consistent build process that complies with Your-Company and customer requirements.

## Personnel

This document applies to Manufacturing and Test Technicians. The Manufacturing Engineering Manager is responsible for reviewing and approving all changes to this document.

Only personnel technically trained and certified by Your-Company, or personnel specifically assigned by Your-Company shall perform the procedures defined in this document.



## Revision History

Rev. Level	Change Order:	Dated	Summary
01	12345	11/21/24	Pre-release
A	56789	02/06/26	Initial release

## Reference Documents

- 25256-5445 Interconnect
- 12345-6789 UPS — Lock Assy

## Requirements

### Materials:

- Cleanroom Wipes

### Parts:

- 07070-55555 KIT, Your-Supplier

## Background

Your-Supplier will supply UPS power to the main compartment and laser directly from the facility. All local UPS units shall be removed from the system. The standard tool can be retrofitted to meet this requirement with an accessory kit (07070-55555). The instructions in this procedure outline the necessary steps to safely perform the retrofit.



---

## Procedure



### **DANGER**

**HAZARDOUS VOLTAGE. WILL CAUSE DEATH OR SERIOUS INJURY. TURN OFF, APPLY LOTO AND VERIFY THERE IS NO VOLTAGE ON THE DEVICE BEFORE SERVICING. REPLACE ALL COVERS BEFORE RETURNING POWER TO THE BREAKERS.**

---

### 1. Remove UPS

The UPS unit in the existing Your-Product must be removed from the rack. A rack-mounted power distribution block replaces the AC power source to the system PC, network devices, and stage controller.



### **WARNING**

**HEAVY OBJECT. THE UPS/LOCK ASSEMBLY WEIGHT APPROXIMATELY 100 LB. TO AVOID MUSCLE STRAIN OR BACK INJURY, USE LIFTING AIDS AND PROPER LIFTING TECHNIQUES WHEN REMOVING OR REPLACING THE ASSEMBLY.**

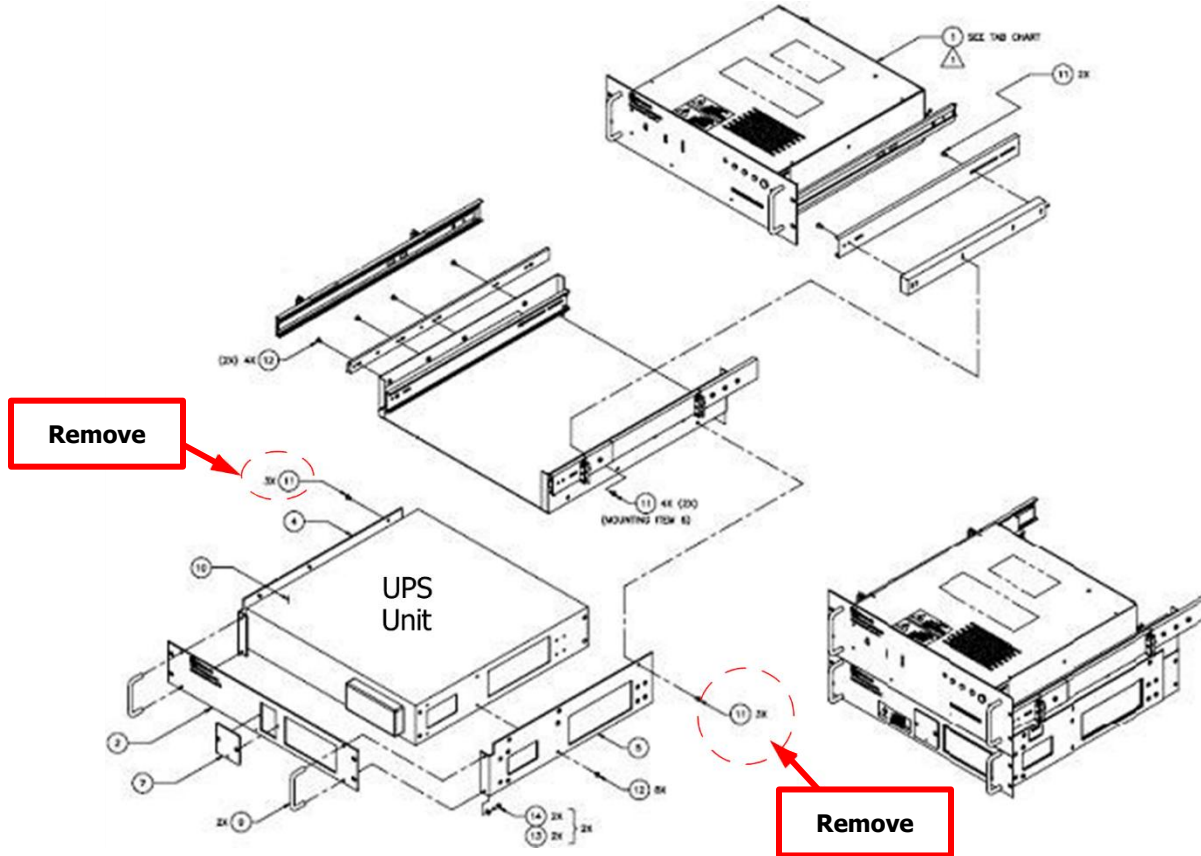
---

1. Slide the UPS and Lock Controller assembly from the frame.
  - 1.1. Disconnect all cables from the UPS and Lock assembly.
  - 1.2. Remove the UPS and Lock assembly.
  - 1.3. Place the UPS and Lock assembly on a level surface.



1.4. Remove the six mounting screws from the two-side panel. See (item 11) in [Figure 1](#).

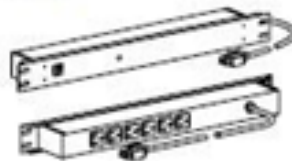
**Figure 1: UPS and Lock Assembly**



- 1.5. Lift and separate the UPS unit from the Lock Controller assembly.
- 1.6. Re-install the Lock Controller assembly to the rack.
- 1.7. Re-connect all Lock Controller cables.

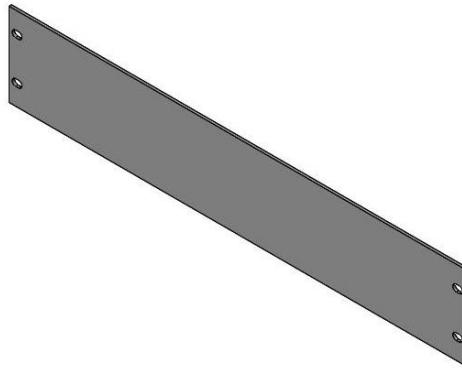
**Figure 2: Power distribution block 7000-11117**

R5BZX



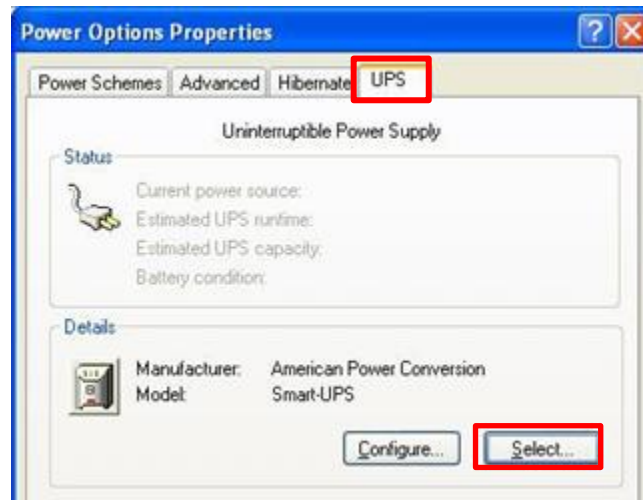
- 1.8. Temporarily mount the power distribution block below the Lock Controller.
- 1.9. Connect the PC, network switch, and stage controller power cords to the outlets.  
See [Figure 2](#).
- 1.10. Plug the distribution block AC power cable into the power strip.
- 1.11. Secure the distribution block to the frame.
- 1.12. Install the 2U blank panel (1240-12345) over the open slot.

**Figure 3: blank panel (1240-12345)**



- 1.13. Power up the system PC and boot into Windows.
- 1.14. Select Windows **Start** > **Settings** > **Control Panel** > **Power Options**.
- 1.15. Select **UPS** tab. See [Figure 4](#).

**Figure 4: UPS tab**



- 1.16. Under **Details**, click **Select**. See [Figure 4](#).

1.17. Click **Select Manufacturer** pull-down menu > **[None]**.

**Figure 5: Manufacturer = [None]**



1.18. Select **Finish**.

1.19. Select **Apply**. See [Figure 6](#).

Windows UPS configuration is complete.

**Figure 6: UPS Configuration**

